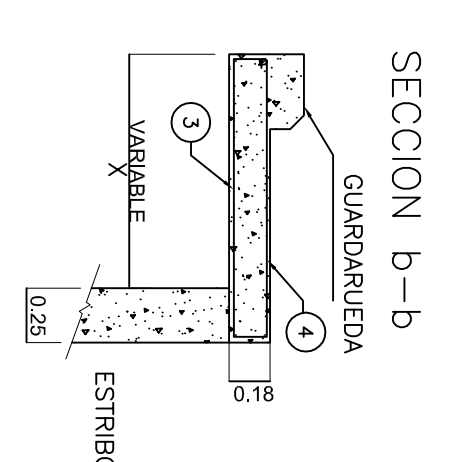
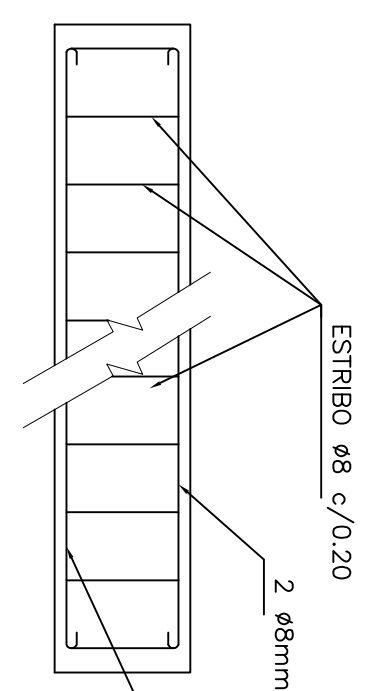
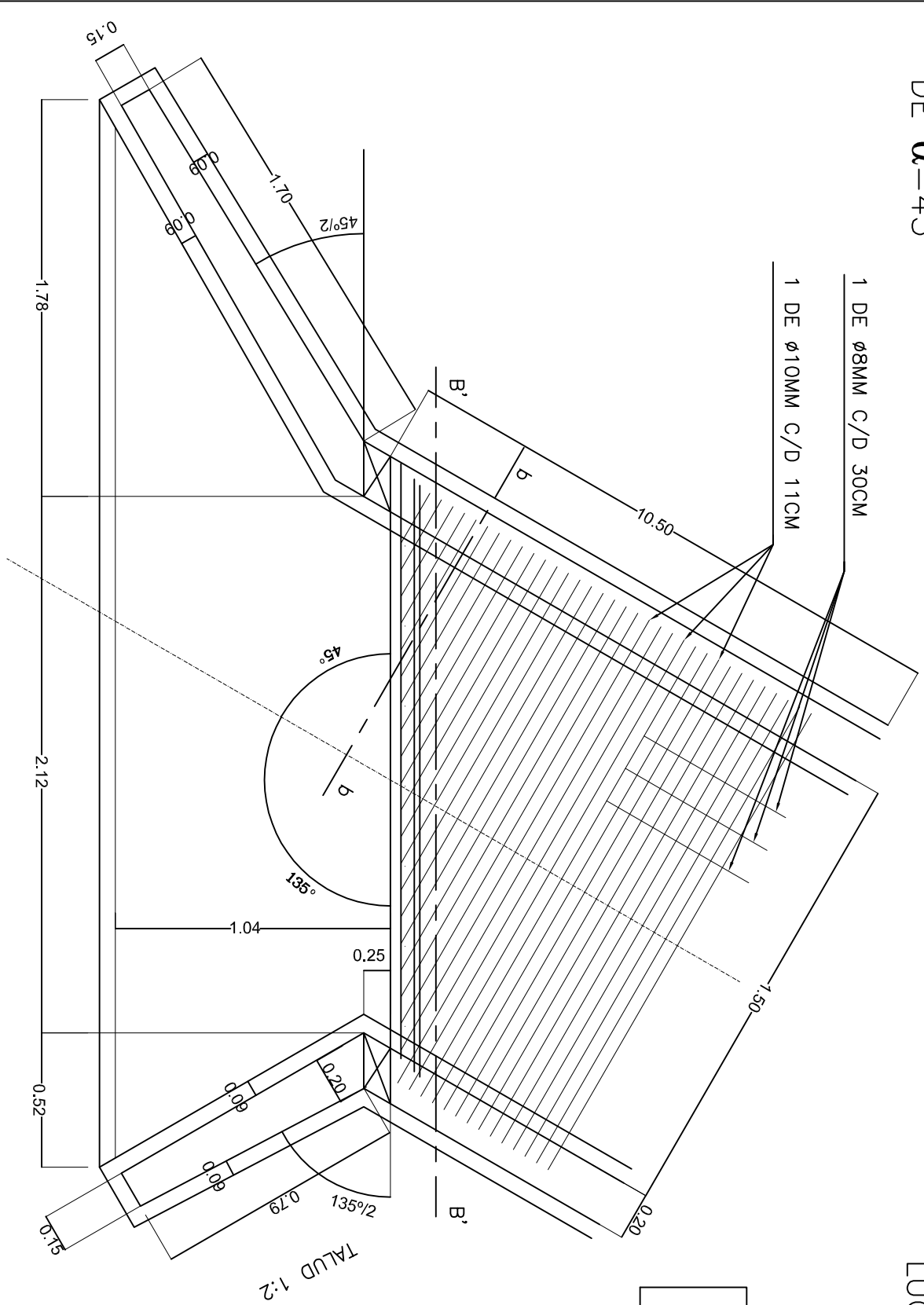
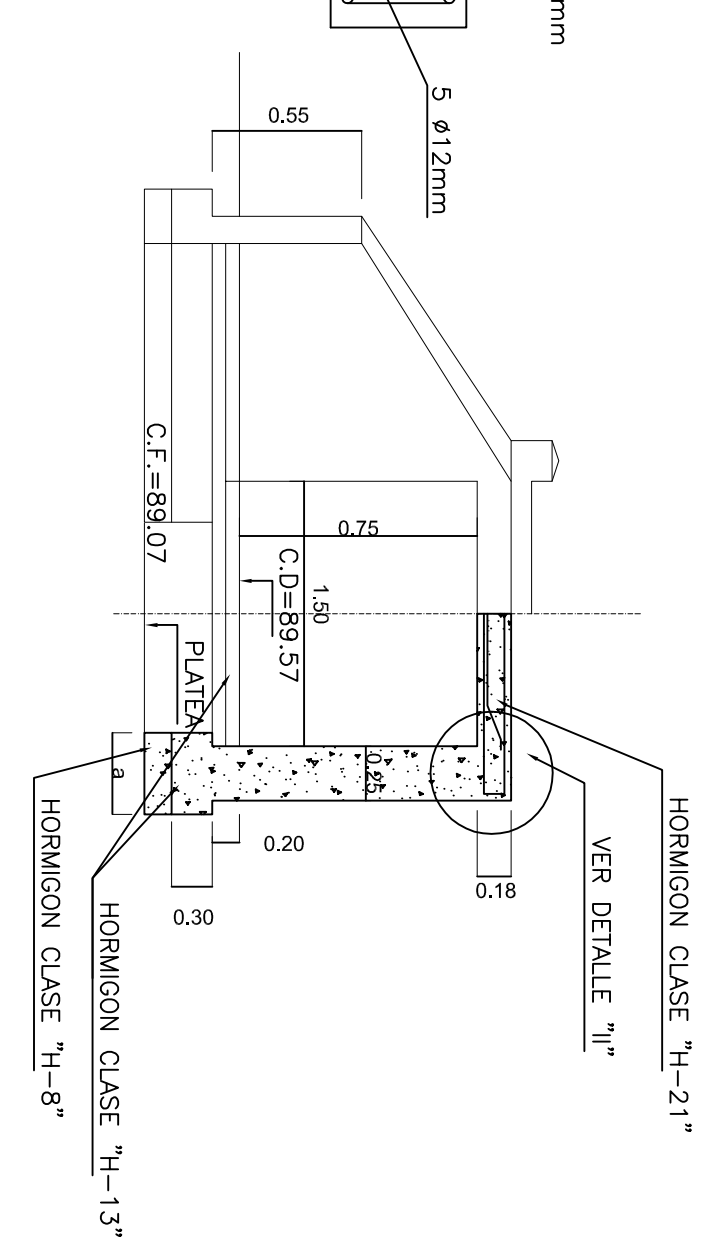


ALCANTARILLA OBLICUA DISPOSICION DE ARMADURA PARA VALORES DE $\alpha=45^\circ$

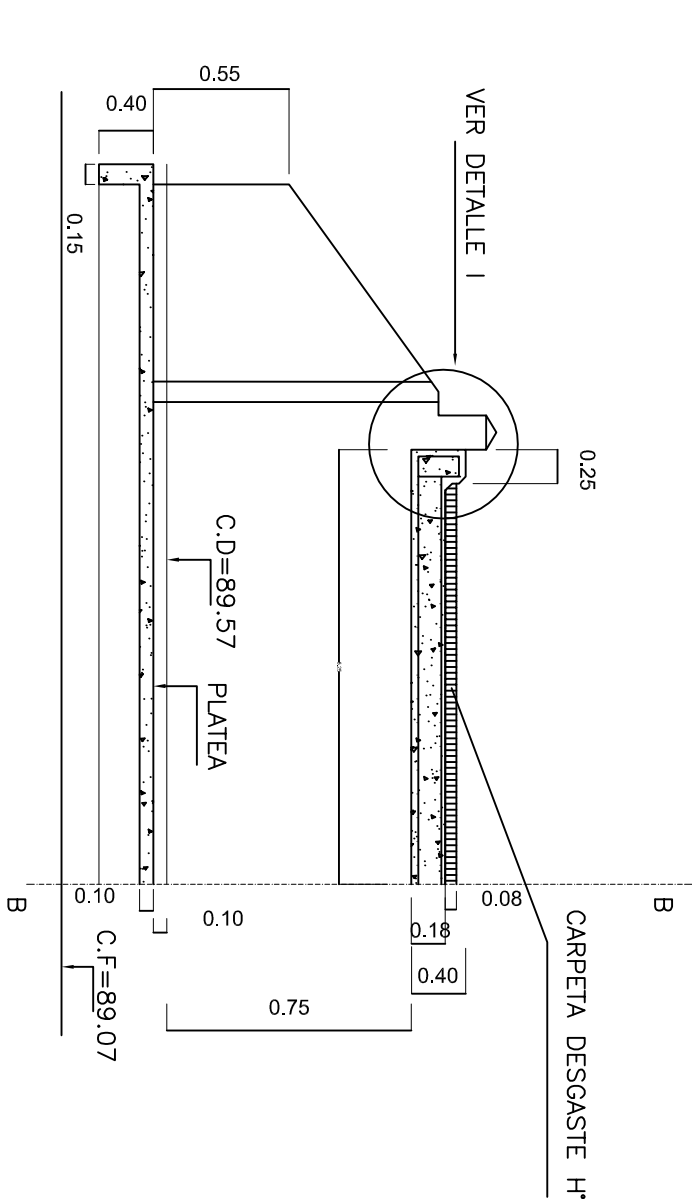
CORTE B'-B' LUCES SIMPLES ($\alpha=45^\circ$)



SEMI VISTA SEMI CORTE B-B

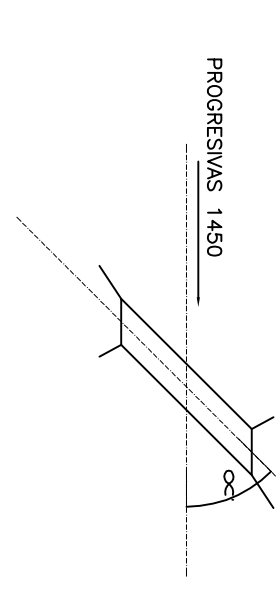
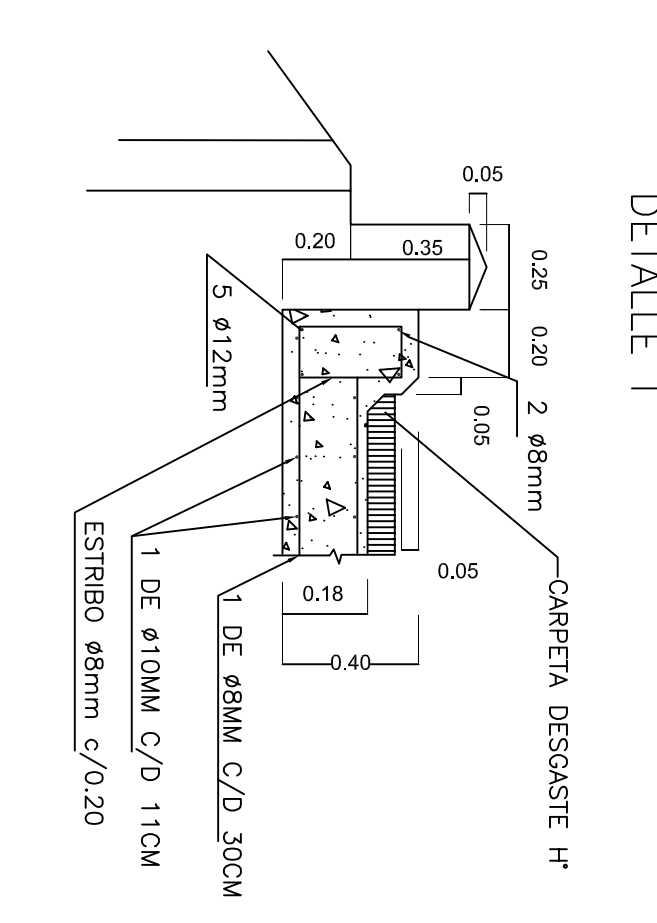


SEMI CORTE A-A



MATERIALES
 HORMIGON CLASE H-21 $\nabla f_c > 210 \text{ Kg/cm}^2$
 ACERO $\nabla f_y > 2400 \text{ Kg/cm}^2$

ALCANTARILLA OBLICUA IZQUIERDA (α)



MUNICIPALIDAD DE SUNCHALES
 LOTE MUNICIPAL 14 HECTAREAS

INT: Dr. Gonzalo Toselli
 PROYECTO: INGENIERIA J. LAMOGNETTI
 DIBUJO: INGENIERIA J. LAMOGNETTI
 PLANO N°13
 MARZO 2019